

TELECOMMUNICATIONS RISER

FIBER OPTIC FLOOR BOX

PRODUCT + BENEFITS

- + **A compact box for easy installation in crowded ducts**
- + **Capacity of 48 splices (4 splice trays), up to 12 subscriber cables**
- + **Riser cable on right or left, no modifications necessary**
- + **Can be locked with tie or lead seal**
- + **Simple, intuitive installation and cabling**

PRESENTATION

The floor box is used to bring the connection to the subscriber cables inside the building. Located on the building riser inside a utility duct or surface mounted on surface-mounted trunking, the floor distribution box is used as the optical connection point for horizontal distribution to subscriber hookups.

With a capacity of 12 subscriber branch cables, the floor box is suitable for simplex, duplex, and quadruplex subscriber hookups.

The floor box is suitable for all types of installations:

- This compact floor box (205 mm x 150 mm x 50 mm) is ideal for use in utility ducts, even if already crowded.
- The cover can be opened with a flat screwdriver and can be locked with a tie or tamper proof locking mounts, making it suitable for surface-mounted configurations.

It is easy and intuitive to connect:

- The riser cable can be installed from the right or left side of the floor box with no need to make modifications to the box
- The mounting hole is in the center, allowing the installer to ensure that the box is level before drilling
- The box also has an integrated level
- The subscriber cable anchor points are cleverly spaced for easier maintenance

Product CO175 closed



CO175 opened




CO175 opened + 4 splice trays CO180

TELECOMMUNICATIONS RISER

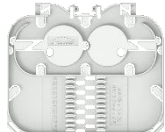
FIBER OPTIC FLOOR BOX



ABOUT THE PRODUCT

Photo	Product	Includes
	CO175 - FIBER OPTIC FLOOR BOX (FOFB) - 12 PORTS	1 base + 1 cover 4 reinforced cable ties for the riser cable 1 level 1 dust-protection foam insert for subscriber cable ports 2 foam combs to hold modules

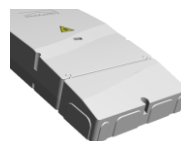
This product is compliant with the XP C 93923-1 product standards and REACH and RoHS environmental



CO180 - TRAY 12 OF
G657A2



CO182 - ADJUSTABLE-HEIGHT
MOUNTING PLATE FOR FIBER
OPTIC FLOOR BOX



CO181 - APRON FOR FIBER
OPTIC FLOOR BOX



CO152 - RISER CABLE
WINDOW CUTTING TOOL

Tray compatible with heat-shrink splice protectors of $\varnothing 2.3$ to 2.6 mm and length 40 to 60 mm

Discover our versions with adapters and pigtails for faster, splice-free subscriber hookups!



ORDERING INFORMATION

Part number	Part name	Pcs.
CO175	FIBER OPTIC FLOOR BOX (FOFB) WITH 12 PORTS	1
CO180	TRAY 12 OF G657A2	20
CO181	APRON FOR FIBER OPTIC FLOOR BOX (FOFB)	1
CO182	ADJUSTABLE-HEIGHT MOUNTING PLATE FOR FIBER OPTIC FLOOR BOX (FOFB)	1
CO184	FIBER OPTIC FLOOR BOX WITH 6 SCAPC + 6 PIGTAILS	1
CO185	FIBER OPTIC FLOOR BOX WITH 12 SCAPC + 12 PIGTAILS	1
CO188	FIBER OPTIC FLOOR BOX WITH 12 LCAPC + 12 PIGTAILS	1

Omelcom is committed to providing superior service and product performance. The product features in this document are subject to change without notice.