

+ PRODUCT BENEFITS

- + Compact box(< 2 Litres)
- + No sealing accessories required
- + Separation of distribution and connected fibres
- + Compatible with all types of optical fibre

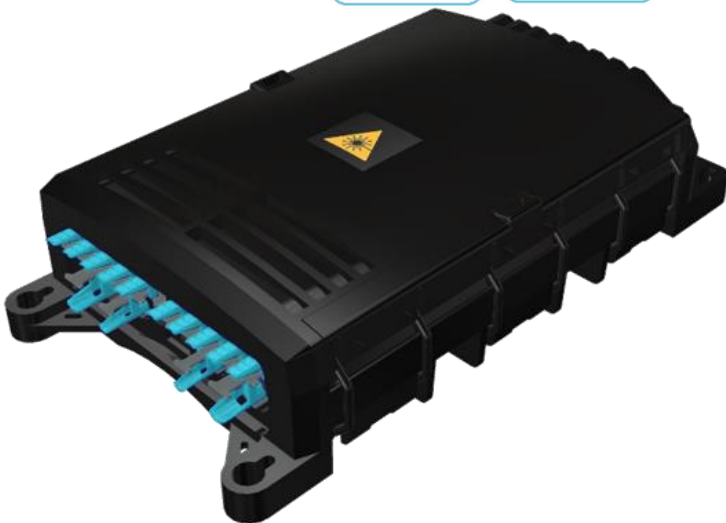
PRÉSENTATION

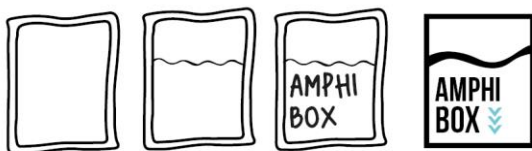
This splice box can store up to 48 fibre optic splices for cable repair, extension and splicing.

It complies with IEC529 IP68 and NF EN 50411-2-10 standards, which allows it to be installed in both aerial and underground environments. It is particularly compact (volume < 2 litres), discrete and can be installed in all types of manhole.

The sealing is provided by a gel technology. No accessory is required to ensure the watertightness of your cables. The enclosure has 3 different sizes of input ports allowing a wide variety of cables to be used. The larger ports can be used for distribution cables as feed-through or termination. The smaller ports can be used for patch cables.

The distribution fibre input and storage area is separate and lockable, to prevent degradation when patch cables are added progressively.



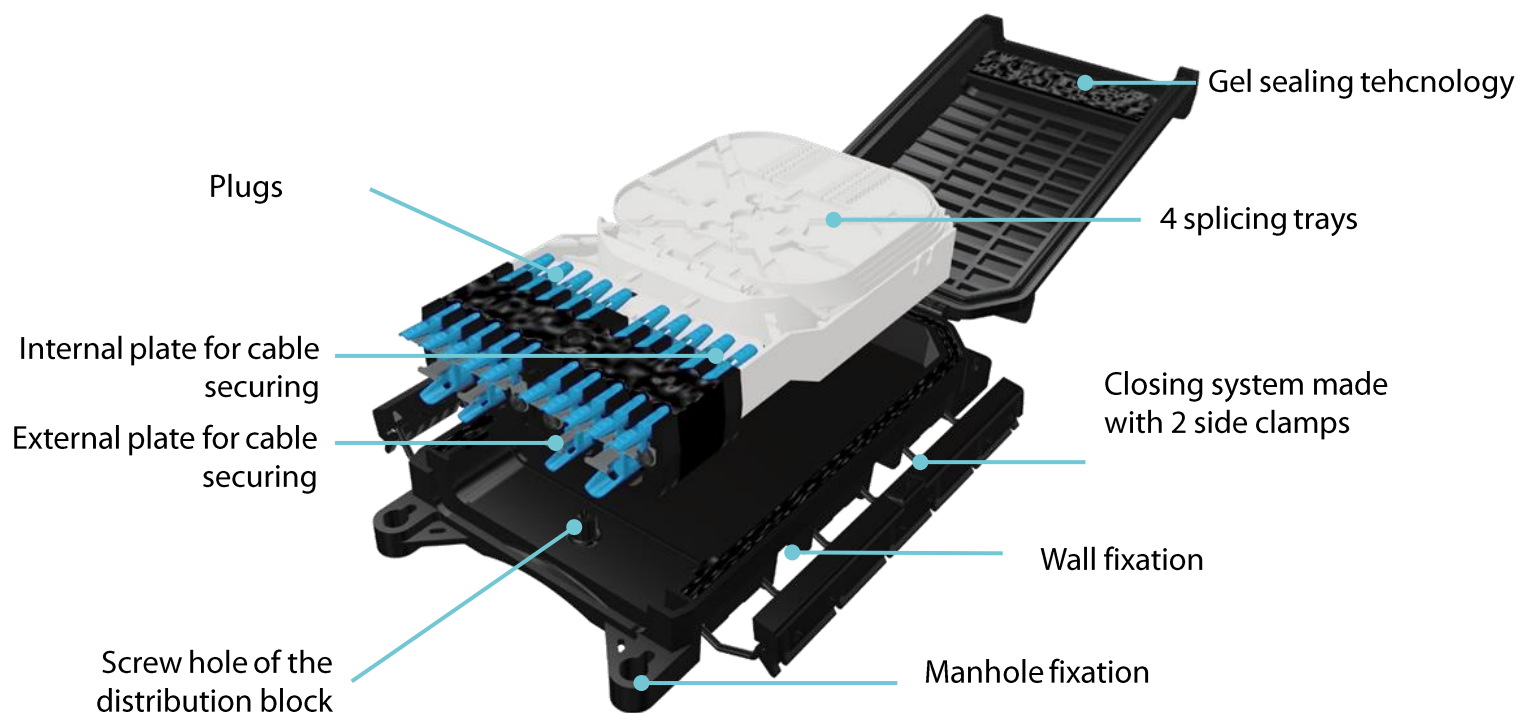


OPTICAL FIBRE UNDERGROUND DISTRIBUTION

48OF 2L Splicing Box

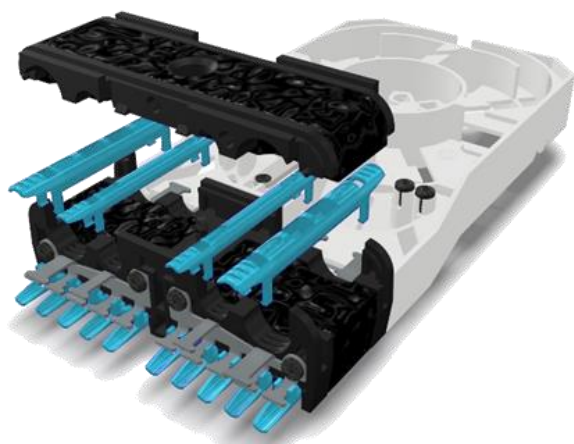
OVERVIEW

Dimensions : 263 x 140 x 60 mm



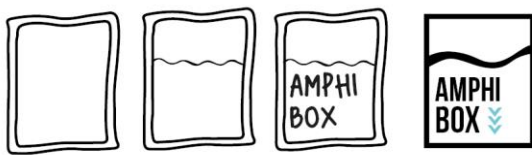
A pressure relief valve can be supplied as an option. Its use is recommended for direct buried sleeve installation.

INPUT PORTS



10 Input ports for cables $\varnothing \leq 7$ mm
 2 Input ports for cables $\varnothing \leq 10$ mm
 2 Input ports for cables $\varnothing \leq 16$ mm

Dans le souci de mieux servir ses clients et d'améliorer les performances de ses produits, OMELCOM se réserve la possibilité de modifier les présentes caractéristiques sans notification préalable



OPTICAL FIBRE UNDERGROUND DISTRIBUTION

48OF 2L Splicing Box

DETAILS

Features of the Box	Performance	Standard reference
Dimensions	263 x 140 x 60 mm	
Weight	xxx	-
IP rating	IP68	NF EN 50411-2-10 Under 1 m of water for 7 days - no water penetration inside the product
Impact	IK10	EN 61300-2-12
Materia	xxx	-
Flame resistance	V0	UL94
UV resistance	Compliant	DIN EN ISO 4892 3: method B, cycle n°5 (350 h)
Compatible fiber type	G652D, G657A1, G657A2	Minimum curves of radius 30 mm
Compatible cables diameters	10 x $\varnothing \leq 7$ mm 2 x $\varnothing \leq 10$ mm 2 x $\varnothing \leq 16$ mm	-
Anchoring on a metal claw	To be made with two tie wraps on cables $\varnothing \leq 6.2$ mm To be made with one metal clamp on cables $\varnothing \geq 6.2$ mm	XP C 93-923-2-2
Restriction of unauthorized access	Thread for coded M4x19 screw	-

Features of the trays	Splice tray performance	Standard reference
Compatible splice protectors	Compatible avec protections d'épissures thermo-rétractables $\varnothing 2,3$ à $2,6$ mm et longueur 40 à 60 mm	-
Number of splice protectors	12	-
Compatible fiber type	G652D, G657A1, G657A2	Minimum curves of radius 30 mm
Height of the splice tray	xxx	-
Length of 250 μ m fiber that can be stored	> 36 m	Storage of 2x12 pigtails of 1,50 m

PACKING DETAILS



The part number CO520 includes :

- 1 box
- 4 metal clamps
- 1 adhesive foam strip
- 8 plastic tie wraps 160 x 4,8 mm
- 20 plastic tie wraps 100 x 2,5 mm
- 4 screws and wall plugs

Part number	Description	Unit per box	Unit per pallet
CO520	BOITIER EPISSURAGE IP68 48FO A COMPOSER	12 pcs	192 pcs
CO421	CASSETTE 12 THERMO POUR AMPHIBOX 48	xxx	xxx

Dans le soucis de mieux servir ses clients et d'améliorer les performances de ses produits, OMELCOM se réserve la possibilité de modifier les présentes caractéristiques sans notification préalable