

DISTRIBUTION FTTH POTEAU / FACADE / IMMEUBLE

**AERIAL DISTRIBUTION BOX IP55
720F**

THE + BENEFITS

- + **Up to 144 welds**
- + **3.4 L volume for installation on aerial supports**
- + **Span-Protect: protected are dedicated zone for the storage of passing and pending modules**
- + **Quick to set up and guaranteed over time thanks to the E@sy'Secure® anchoring system**
- + **Protection index IP55**

PRESENTATION

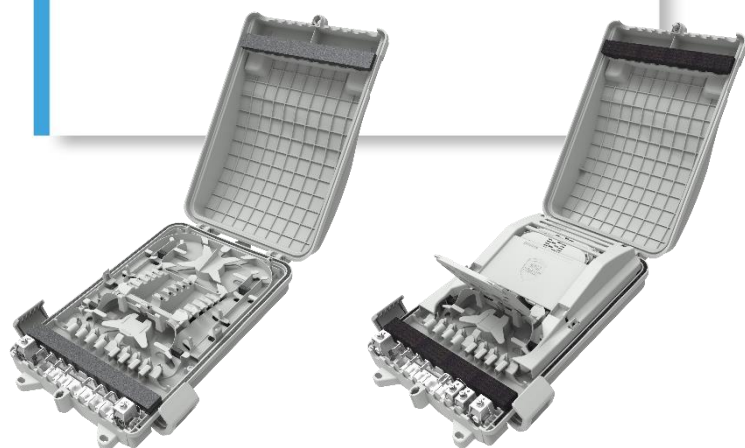
It enables the realization of stitching, straight joint and by-pass operations, and therefore can be used as a Building Transition Box, a Splice Protection Box or an Aerial Distribution Box. It can be installed directly on a pole, or using clamps, either on a facade or a building. It can accommodate up to 144 heat-shrink sleeves protection in a reduced volume of 3,4L to allow installation on aerial supports.



It can be equipped with the Distri-Protect® system to protect the passing micromodules, and lock 5 or 6 trays. This system is highly recommended by the french legislation when the box is used in a mix of by-pass and connections configuration.



All references are equipped of the E@sy'Secure® anchoring system, which allows cables to be fixed in only 45 seconds, for 4x greater mechanical retention than required in standard NF EN 61300-2-4.



Ref : CO030
To compose version

Ref : CO032
Fully equipped version

DISTRIBUTION FTTH POTEAU / FACADE / IMMEUBLE

AERIAL DISTRIBUTION BOX IP55 720F

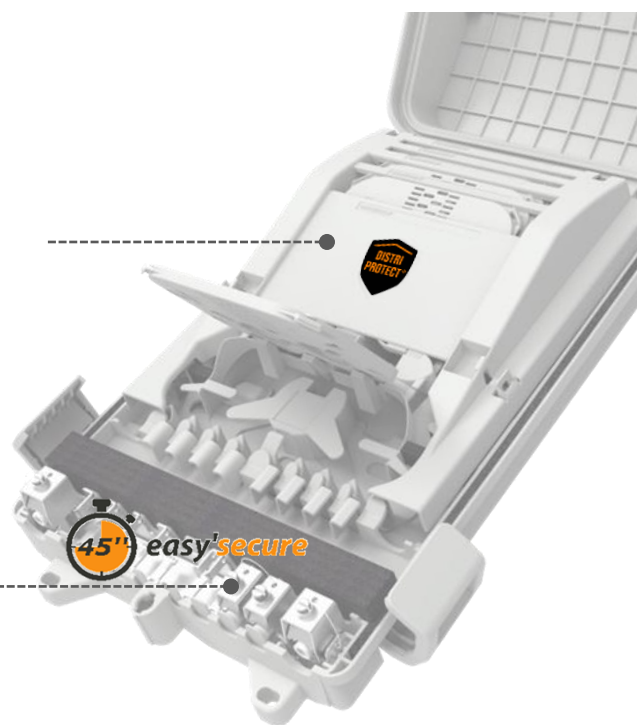
THE TECHNICAL ADVANTAGES

The Span-Protect system makes it possible to separate the storage of the various pending modules, while protecting the modules in transit

- Reduction of the number of boxes > 10% in general
- Saving installation costs
- Maintenance cost savings, because of the diminution of the bad manipulation risk as well as the risk to have network cuts during the connection phase.

The E @ sy'Secure® system ensures optimum grip

- Reduction of cable anchoring time by 10, improvement of anchoring grip by 4
- No additional parts to anchor
- Anchoring a wide range of cable diameters
- Less maintenance, the cables having no more risk of slipping and creating cuts



MAIN CHARACTERISTICS

Caracteristics	Performances	Standard of references
Anchoring with the E@sy'Secure® system	Tensile strength : > 80 D for HDPE sheath / 10 D for LSZH sheath (Example for a HDPE cable ø15 mm, tensile strength > 1200N) Torsional strength : ± 90°	EN 61300-2-4 EN 61300-2-5
IP – IK	IP55 IK08	EN 60529 EN 61300-2-12
Closing system	Triangular screw + 2 side couplings	-
Material	UV resistant Grey RAL7035	ISO 4892-2 ISO 11664-4
Fixation	By screw or lag screw on frontage (3 screw Ø 6 mm) / By bolt on omega fitting / Strip on pole	-
Compatible fiber type	Monomode G657A2	IEC 60793-2-50
Slice protection type	Compatible with heat-shrink sleeves protection ø2,3 à 2,6 mm & length 40 à 60 mm	-

DISTRIBUTION FTTH POTEAU / FACADE / IMMEUBLE

AERIAL DISTRIBUTION BOX IP55 720F

USAGE CHARACTERISTICS



Dimensions 346 x 232 x 77 mm (Vol. 3,4 L)



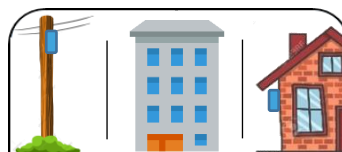
16 cables for aerial distribution box configuration
8 cables for splice protection box or
building transition box configuration



Capacity up to 72 welds



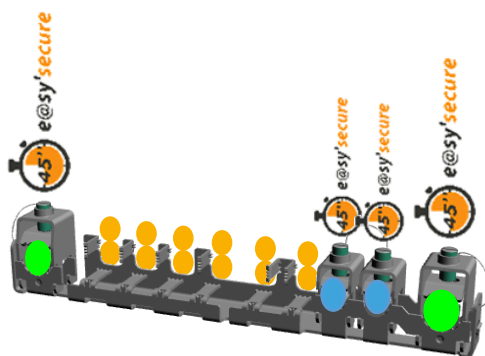
IP55 | IK08



POLE | BUILDING | FACADE

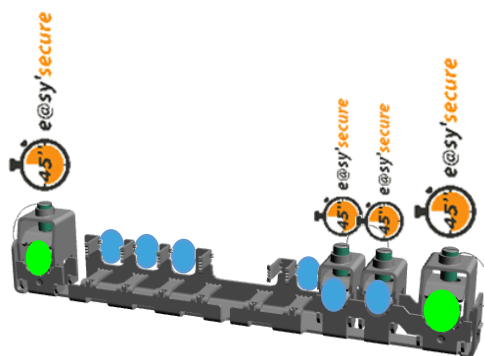


Use of input / outputs ports in Aerial Distribution Box configuration



- Cables $6 \leq \varnothing \leq 15$ mm
- Cables $6 \leq \varnothing \leq 10$ mm
- Cables $3,8 \leq \varnothing \leq 6,2$ mm

Use of input/output ports in Splice Protection Box and Building Transition Box configuration



NB : These diagrams present two ways to use the same anchor bar. As such, the bar can also be used to achieve a mix of cables \varnothing 3,8-6,2 mm and cables \varnothing 6-10 mm.

DISTRIBUTION FTTH PÔTEAU / FACADE / IMMEUBLE

AERIAL DISTRIBUTION BOX IP55 72OF

DELIVERY INFORMATION

Zoom on the accessories



Reference : CO035

Distri-Protect® for box 72 OF

The Distri-Protect® system permits the creation of a zone dedicated to the protection of the passing modules, as well as the welding for by-passing cables. It can be put during the installation phase or later on.

List of references

Reference	Products' designation	Packing information	Palettisation
CO030	SLICE PROTECTION BOX IP55 72OF TO COMPOSE	Box of 8 pcs	Pallet of 128 pcs
CO032	SLICE PROT. BOX IP55 144OF SUB. EQUIPPED <i>Shipped with 12 trays 12OF + 1 triangular key</i>	Box of 8 pcs	Pallet of 128 pcs
CO180	TRAY 12OF G657A2	Box of 10 pcs	-
CO179	BIZONAL TRAY 8OF G657A2	Box of 10 pcs	-
CO035	DISTRI-PROTECT® SYSTEM FOR 72OF BOX	Box of 25 pcs	
CO015	SAFETY TRIANGULAR SCREW	Packet of 100 pcs	
AO005	HEAT-SHRINK PROTECTION SLEEVES Ø2,3mm LENGTH 60 mm	Packet of 25, Box of 500 pcs	-
AO006	HEAT-SHRINK PROTECTION SLEEVES Ø2,3mm LENGTH 45 mm	Packet of 100, Box of 500 pcs	-